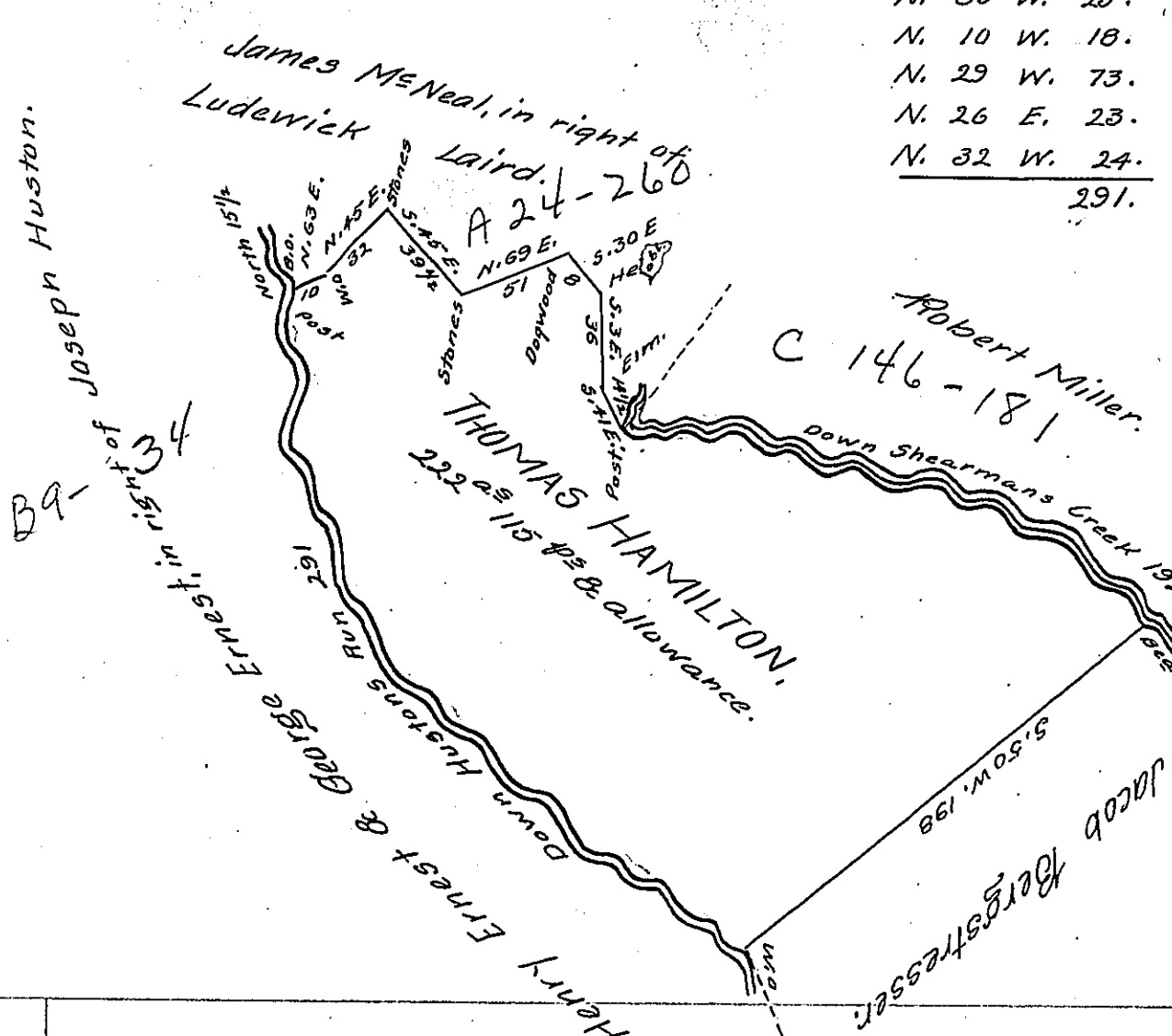


Courses & Distances of Hustons Run.

N. 04 W. 26.  
 N. 55 W. 58.  
 N. 29 W. 37.  
 West ----- 7.  
 N. 65 W. 25.  
 N. 10 W. 18.  
 N. 29 W. 73.  
 N. 26 E. 23.  
 N. 32 W. 24.  
291.



Courses & Distances of Shearmans Creek,  
 S. 79 E. 98.  
 S. 55 E. 33.  
 S. 81 E. 61.  
192

THE DRAFT of a tract of land situate in Toboyne Township Cumberland County Containing two hundred twenty two acres 115 1/2 & allowance Surveyed 28<sup>th</sup> November 1815 in pursuance of a warrant granted to Thomas Hamilton dated 30<sup>th</sup> Sept<sup>r</sup> 1765.

J. Bob<sup>l</sup> Clark, D. S.

To Rich<sup>d</sup> T. Leech Esquire,  
 Surveyor Gen<sup>l</sup> of Pennsylvania.

IN TESTIMONY that the above is a copy of the original remaining on file in the Department of Internal Affairs of Pennsylvania, made conformably to an Act of Assembly approved the 16th day of February, 1833, I have hereunto set my Hand and caused the Seal of said Department to be affixed at Harrisburg, this Twenty-eighth day of March 1905.

*Joseph D. Brown*  
 Secretary of Internal Affairs.